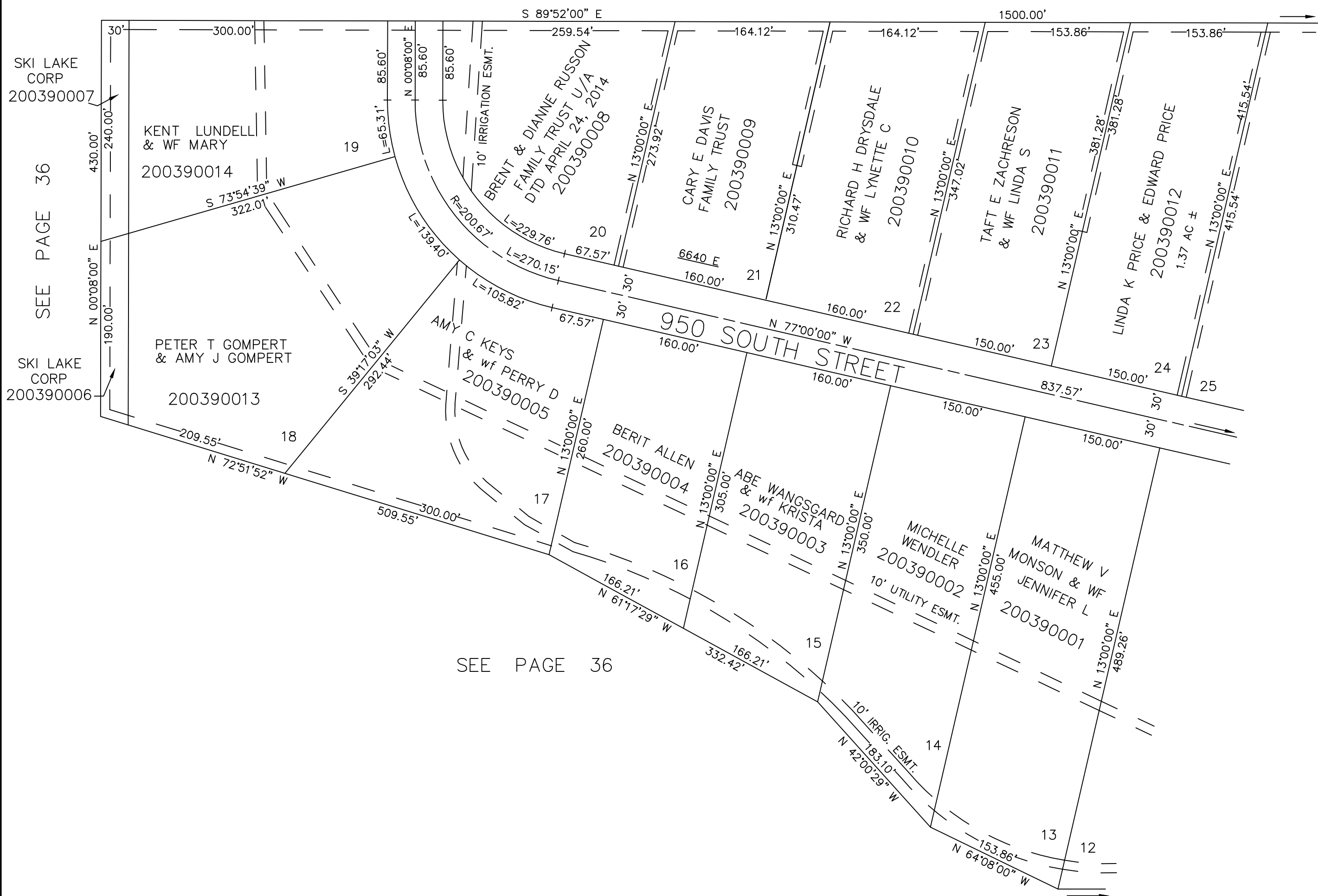


PART OF THE NORTH 1/2 OF SEC. 24, T.6N., R.1E., S.L.B. & M.
VALLEY-LAKE ESTATES NO. 2

TAXING UNIT: 318

LOTS 13-24
 IN WEBER COUNTY
 SCALE 1" = 100'

SEE PAGE 13



SEE PAGE 36

SEE PAGE 36

SEE PAGE 36

SEE PAGE 38

10' UTILITY & DRAINAGE EASEMENTS
 EACH SIDE OF PROPERTY LINES AS
 INDICATED BY DASHED LINES EXCEPT
 AS OTHERWISE SHOWN.

FOR COMPLETE ENG DATA SEE
 ORIGINAL DEDICATION PLAT IN
 BOOK 15, PAGE 27 OF RECORDS.